

# PLASMON

**A new, ground based data-assimilative  
model of the Earth's Plasmasphere – a critical  
contribution to Radiation Belt modeling for  
Space Weather purposes**

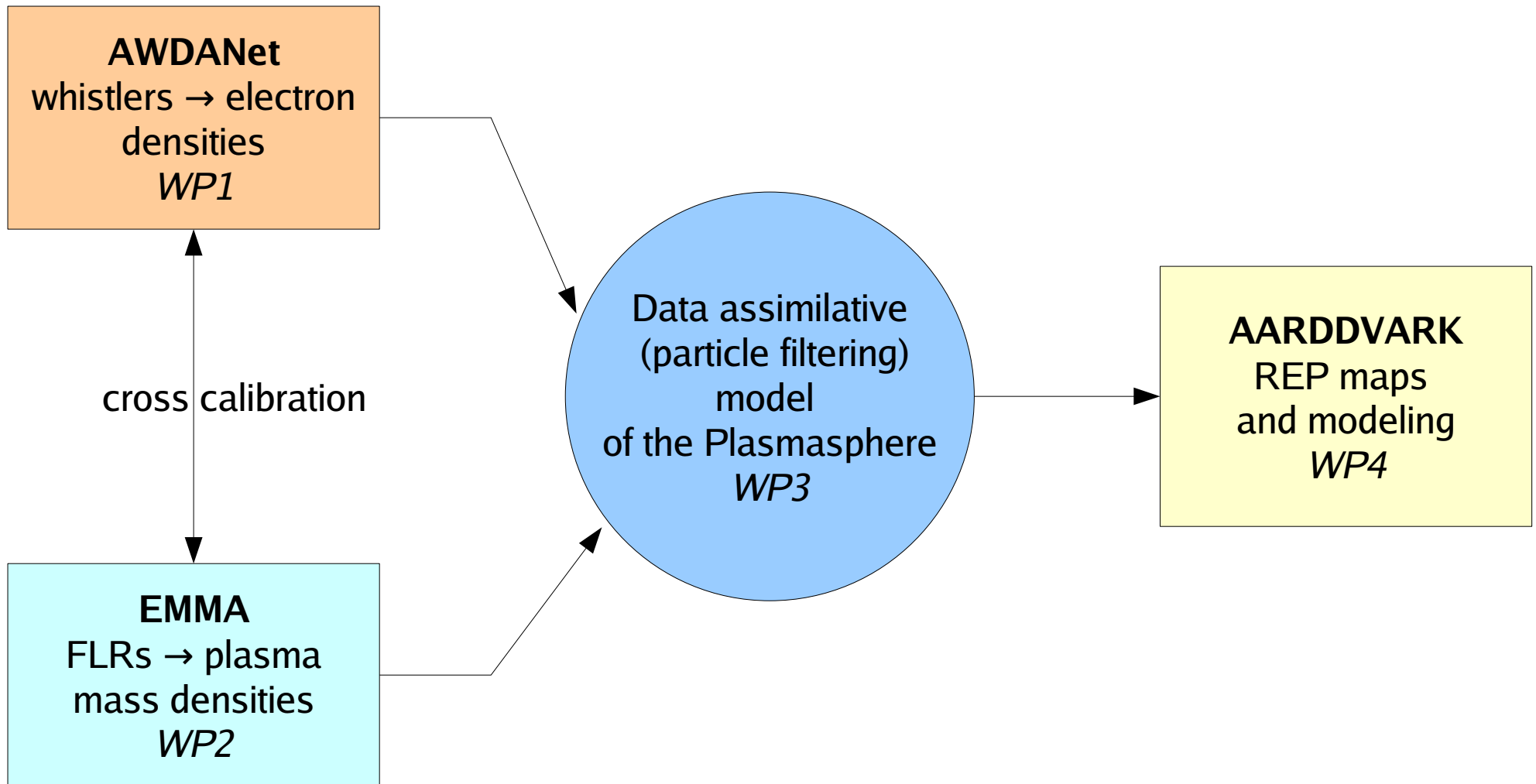


***János Lichtenberger<sup>1</sup> and the PLASMON Team***

(1)Space Research Group, Department of Geophysics and Space Sciences,

Eötvös University, Budapest, Hungary

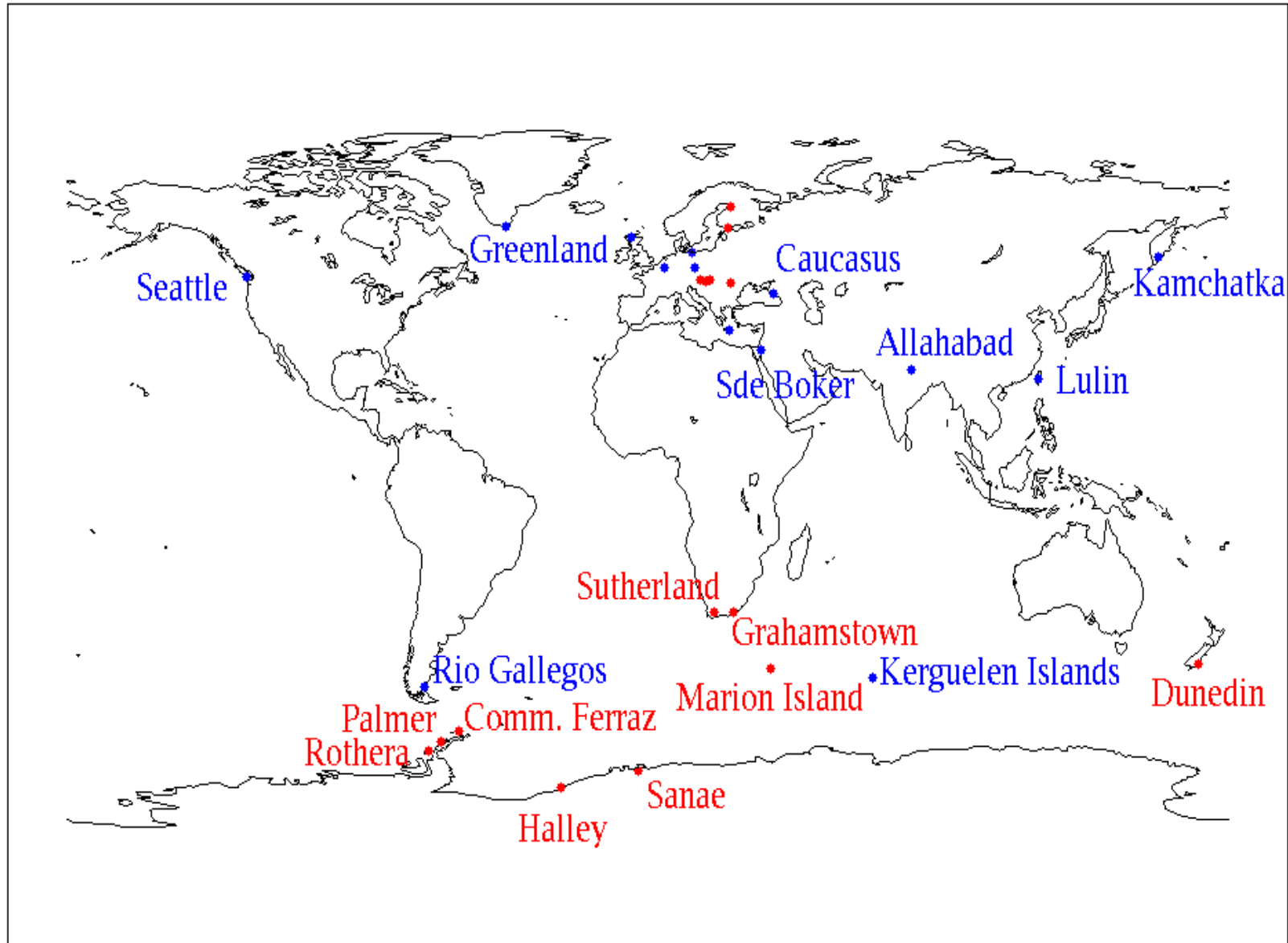
# PLASMON structure



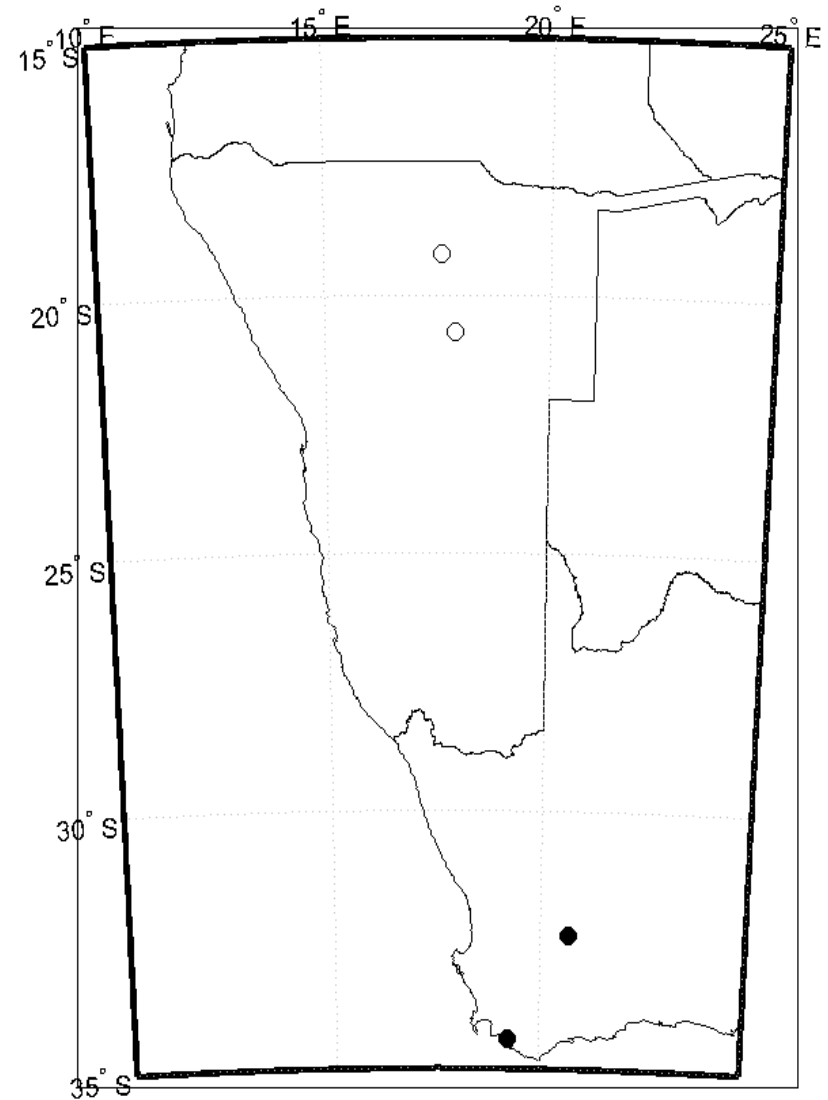
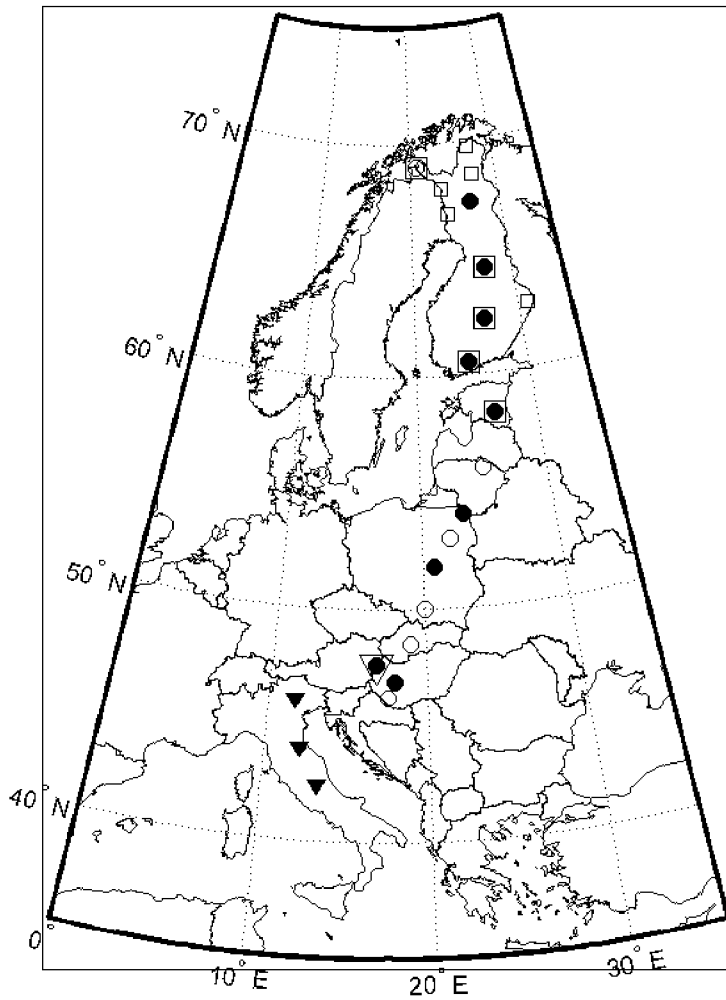
# ***AWDANet -Europe***



# ***AWDANet - World***



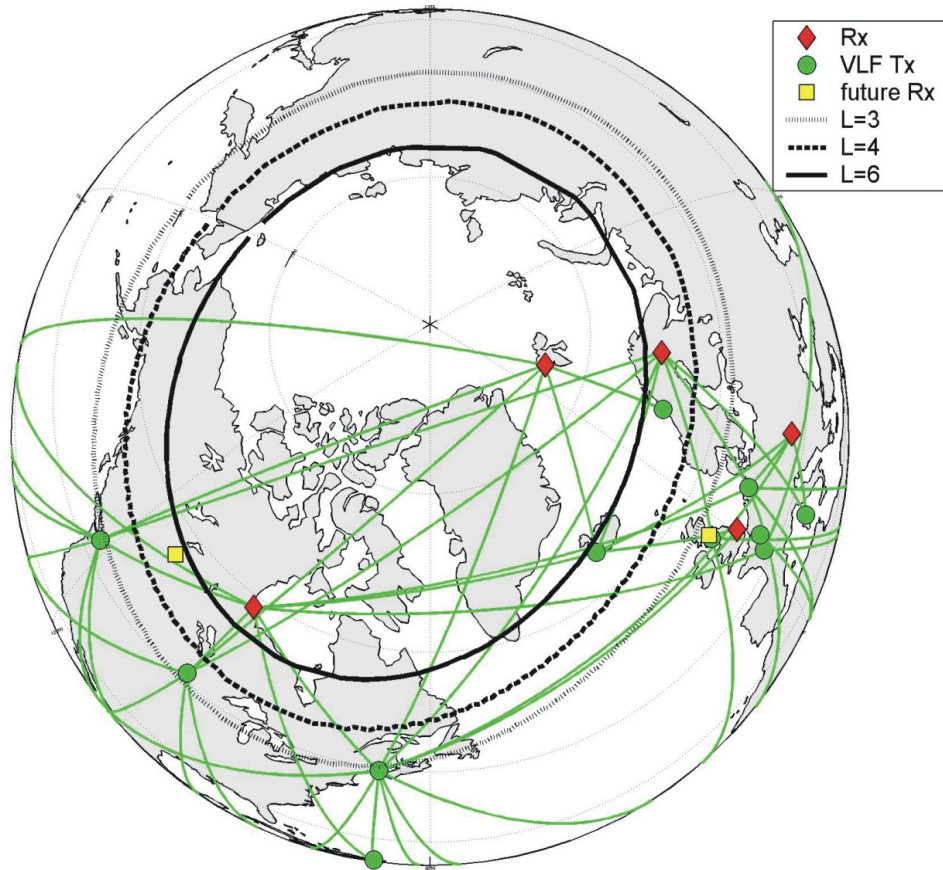
# *EMMA* (European quasi-Meridional Magnetometer Array) + *SA network*



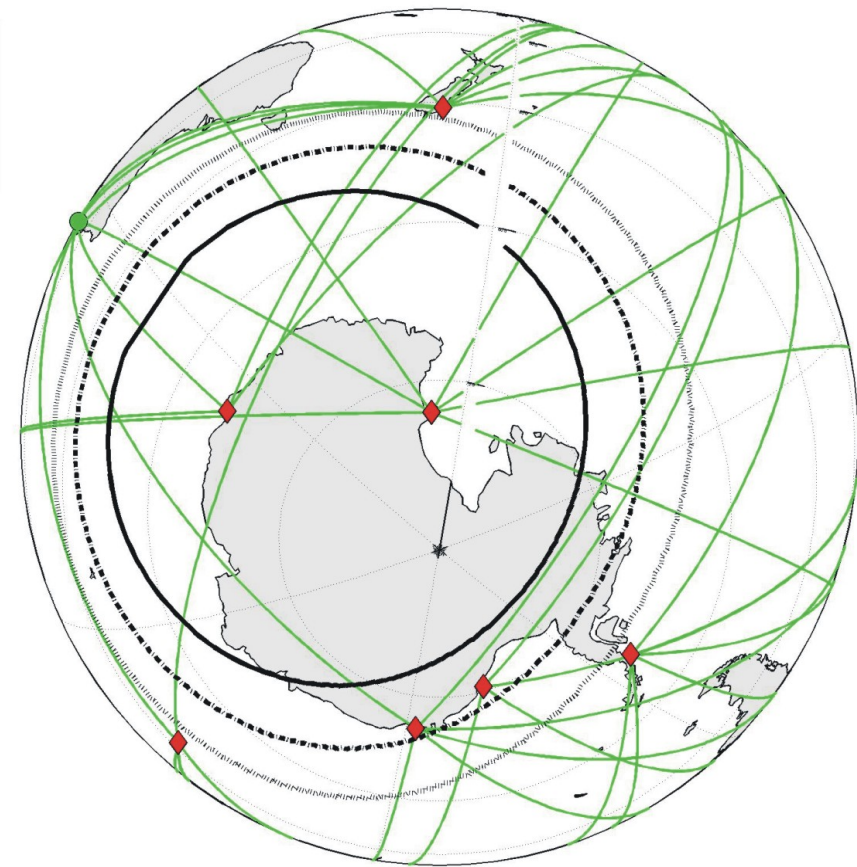
# ***ARDDVARK - existing network***

(Antarctic-Arctic Radiation-belt (Dynamic) Deposition -VLF Atmospheric Research Konsortia)

**AARDDVARK Aarmory**

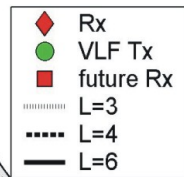
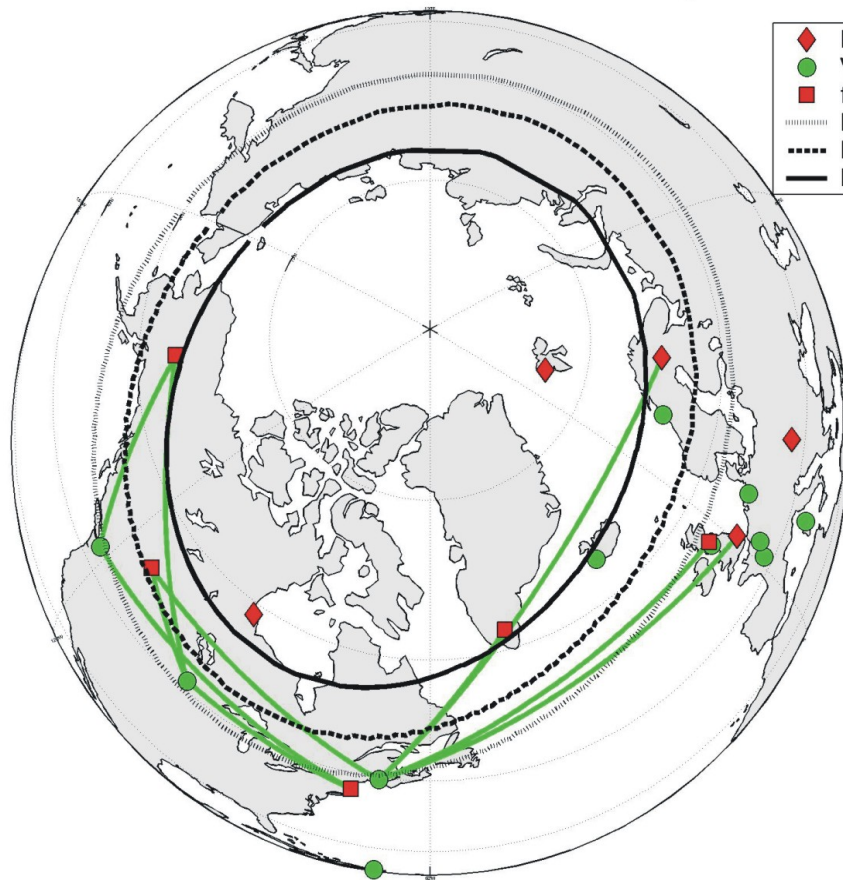


**AARDDVARK Aarmory**

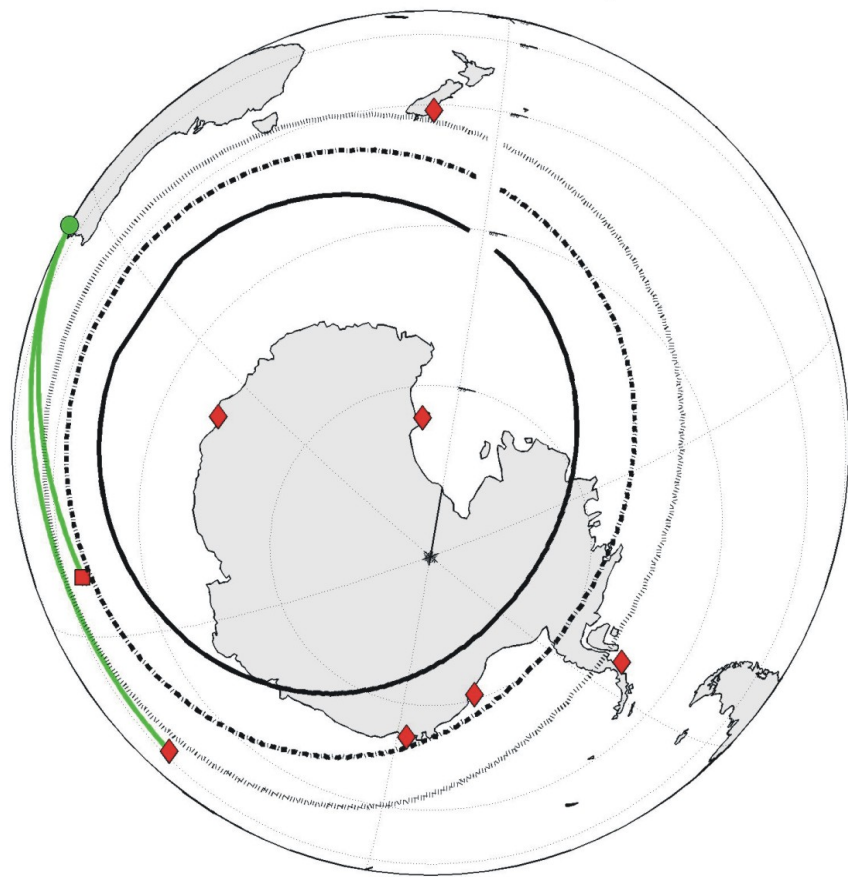


# ***AARDDVARK -extended network***

**Post FP7 AARDDVARK Aarmory**



**AARDDVARK Aarmory**





# Participants

<b>Participant</b>		<b>Country</b>
Eötvös Loránd University	János Lichtenberger	Hungary
British Antarctic Survey	Mark Clilverd	UK
Eötvös Loránd Geophysical Institute	Balázs Heilig	Hungary
University of L'Aquila	Massimo Vellante	Italy
Sodankyla Geophysical Observatory	Thomas Ulich	Finland
University of Otago	Craig Rodger	New Zealand
Hermanus Magnetic Observatory	Andrew Collier	South Africa
New Mexico Institute of Mining and Technology	Anders Jorgensen	USA
Institute of Geophysics, Polish Academy of Sciences	Jan Reda	Poland
University of Washington	Robert Holzworth	USA
Los Alamos National Laboratory	Reiner Friedel	USA